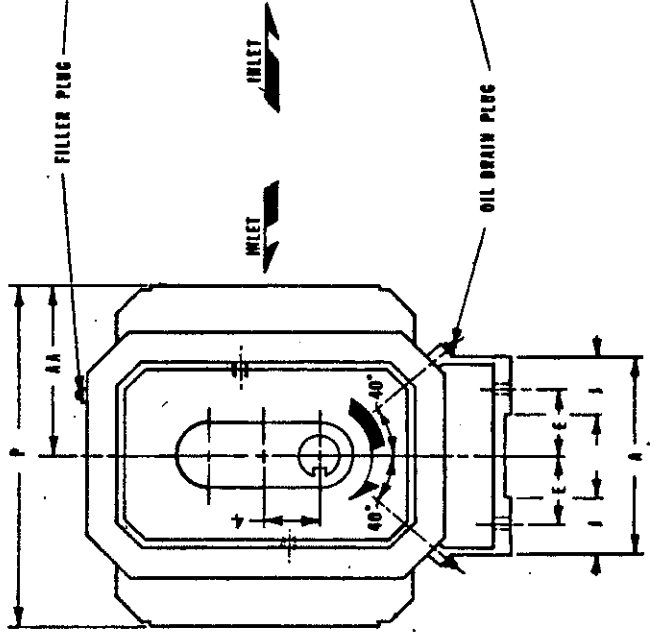


FOR V-BELT DRIVEN UNITS, ROTOR TO BE LOCATED ON INLET SIDE OF BLOWER.  
 \*USED ON OIL COOLED UNITS ONLY.  
 WATER COOLER INLET TO BE ON DISCHARGE SIDE OF REARPLATE.  
 1 GPM WATER-FLOW RATE AT 40 PSIG MAX. WATER PRESSURE.



CLOCKWISE ROTATION  
 FURNISHED UNLESS OTHERWISE SPECIFIED

COUNTER CLOCKWISE ROTATION  
 FURNISHED ONLY WHEN SPECIFIED

	10" FLG.	12" FLG.	14" FLG.
OPENING	10.00	12.00	14.00
BOLT CIRCLE	14.25	17.00	18.75
FLANGE O.D.	16.70	19.00	21.00
NO TAPPED HOLES	12	12	12
SIZE HOLES	7/8 - 9	7/8 - 9	1 - 8
TAP DEPTH	1.31	1.31	1.50

**RCS-J WHISPAIR BLOWER - BOTT. DRIVE**

FRAME SIZE	V-BELT DRIVE DATA																APPROX. WEIGHT																															
	A	B	C	D	E	F	G	H	I	J	K	L	M	N	O	P		Q	R	S	T	V	W	W'	AA	AB	AC	AD	AE	AF	AG	AH	AI	AJ	AK	AL	AM	AN	AO	AP	AQ	AR	AS	AT	AU	AV	AW	AX
817 JV	13.75	24.25	38.63	13.00	4.63	10.75	1.00	14.00	3.25	14.50	5.00	30.00	25.50	17.00	2.75	4.00	.625	x	.313	10" FLG	10" FLG	10" FLG	12.75	7.19	13.2	144FL.0Z.	80FL.0Z.	1.620	LBS																			
821 JV	"	27.88	42.25	"	"	12.56	"	"	"	16.31	"	"	"	"	"	"	"	"	"	12" FLG	10" FLG	"	"	"	"	"	"	1800	LBS																			
826 JV	"	33.13	47.50	"	"	15.19	"	"	"	18.94	"	"	"	"	"	"	"	"	"	12" FLG	12" FLG	"	"	"	"	"	"	2075	LBS																			
832 JV	"	38.50	52.00	"	"	17.88	"	"	"	21.63	"	"	"	"	"	"	"	"	"	14" FLG	12" FLG	"	"	"	"	"	"	2325	LBS																			

CERTIFIED CORRECT FOR

CUSTOMER ORDER NO. \_\_\_\_\_  
 ROOTS ORDER NO. \_\_\_\_\_  
 DATE \_\_\_\_\_

V-BELT DRIVE DATA

BELTS \_\_\_\_\_  
 DRIVE SNEAVE \_\_\_\_\_  
 DRIVEN SNEAVE \_\_\_\_\_  
 CENTER DISTANCE \_\_\_\_\_

**ROOTS** **DRESSER**

DRESSER INDUSTRIES, INC.  
 ROOTS OPERATIONS  
 900 WEST MOUNT STREET, CONNERSVILLE, INDIANA 47331  
 TELEPHONE: 317/825-2181

REM 10/25/05  
 8044-1/04/05  
 ASB-1/24/04

864-928-021